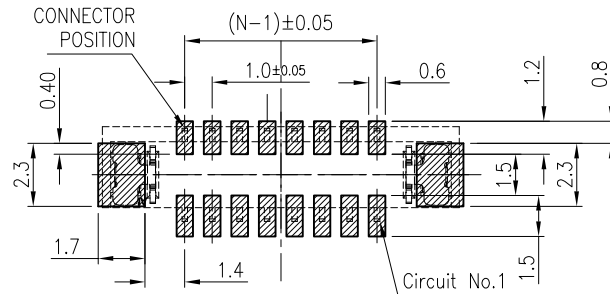
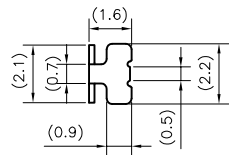
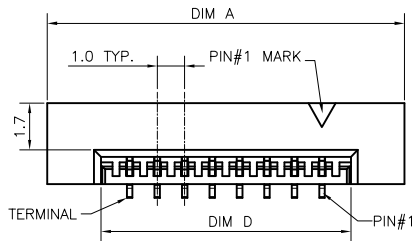


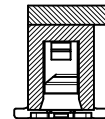
RECOMMENDED APPLICABLE FPC LAYOUT
(THICKNESS:0.3±0.03)



PCB PATTERN LAYOUT



FITTING NAIL PLATE DIM.



SECTION B-B

50673-XXX X X - XXX
 NO OF CKT
 PACKING
 O:TAPE & REEL
 PLATING
 N: MATT TIN
 1: G/F OVER ALL

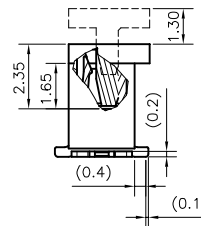
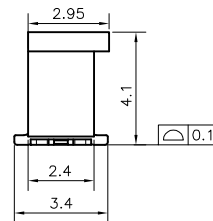
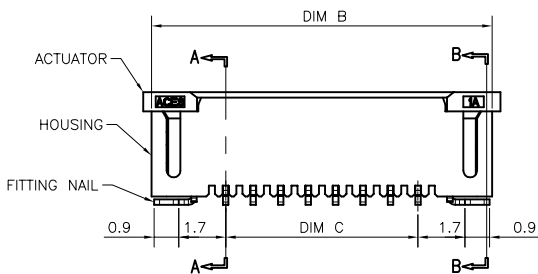
NOTES:

- MATERIAL:
 - HOUSING: THERMOPLASTIC, HIGH TEMP., UL94V-0; COLOR:BLACK.
 - ACTUATOR: THERMOPLASTIC, HIGH TEMP., UL94V-0; COLOR:NATURAL.
 - CONTACT: COPPER ALLOY
 - FITTING NAIL: COPPER ALLOY
- FINISH:
 - CONTACT:
 - 100u" MIN. TIN PLATING OVERALL,
 - N:50u" MIN. NICKEL UNDERPLATING OVERALL.
 - 1:GOLD FLASH OVERALL.
 - FITTING NAIL:
 - 100u" MIN. TIN PLATING OVERALL,
 - N:50u" MIN. NICKEL UNDERPLATING OVERALL.
 - 1:GOLD FLASH OVERALL.
- REFLOW SOLDER CAPABLE TO 260°C PER ACES SPEC.
- SPEC. PLS. REFER TO PS-50552-XXXXX-XXX.
- PACKAGE PLS. REFER TO 91501-XXXXX-TRP.

6. PART NUMBER

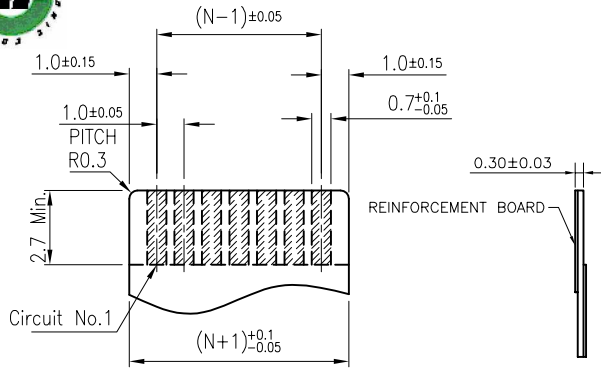
XXX	HOUSING COLOR	ACTUATOR COLOR	PACKAGE	PIN 1# POSITION
001	BLACK	NATURAL	91501-(2*XX+1)CR	THE RIGHT SIDE (TOP VIEW)

CKTS	DIM A	DIM B	DIM C	DIM D	CKTS	DIM A	DIM B	DIM C	DIM D
004	9.0	8.4	3.0	5.1	015	20.0	19.4	14.0	16.1
005	10.0	9.4	4.0	6.1	016	21.0	20.4	15.0	17.1
006	11.0	10.4	5.0	7.1	017	22.0	21.4	16.0	18.1
007	12.0	11.4	6.0	8.1	018	23.0	22.4	17.0	19.1
008	13.0	12.4	7.0	9.1	019	24.0	23.4	18.0	20.1
009	14.0	13.4	8.0	10.1	020	25.0	24.4	19.0	21.1
010	15.0	14.4	9.0	11.1	021	26.0	25.4	20.0	22.1
011	16.0	15.4	10.0	12.1	022	27.0	26.4	21.0	23.1
012	17.0	16.4	11.0	13.1	023	28.0	27.4	22.0	24.1
013	18.0	17.4	12.0	14.1	024	29.0	28.4	23.0	25.1
014	19.0	18.4	13.0	15.1					

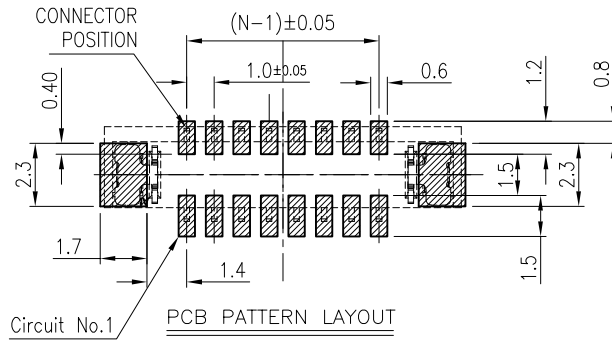


SECTION A-A

QUALITY SYMBOLS MAJOR Ⓢ CRITICAL Ⓢ GENERAL TOLERANCES (UNLESS SPECIFIED) X ±0.5 .X ±0.25 .XX ±0.15 .XXX ±0.1 ANGLES ±2°	DRAWN BY Zhu, Wei DATE 20/04/27		
	CHECKED BY Xu, Zhi Yong DATE 20/04/27		
	APPROVED BY Xu, Zhi Yong DATE 20/04/27	TITLE 1.0mm PITCH ZIF CONN. SMT S/T TYPE	
	UNITS mm	SIZE A4	DWG NO. 50673-XXXXX-XXX
SCALE 5:1	SHEET NO. 1 OF 2	REV E	PART NO. SEE NOTES



RECOMMENDED APPLICABLE FPC LAYOUT
(THICKNESS: 0.3±0.03)



PCB PATTERN LAYOUT

NOTES:

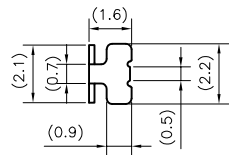
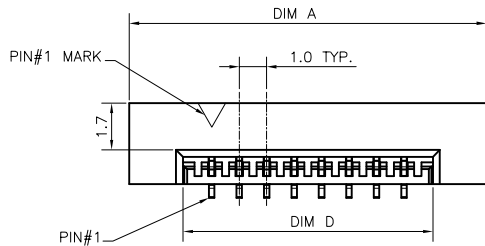
1. MATERIAL:
 - 1.1 HOUSING: THERMOPLASTIC, HIGH TEMP., UL94V-0; COLOR: BLACK.
 - 1.2 ACTUATOR: THERMOPLASTIC, HIGH TEMP., UL94V-0; COLOR: NATURAL.
 - 1.3 CONTACT: COPPER ALLOY
 - 1.4 FITTING NAIL: COPPER ALLOY
2. FINISH:
 - 2.1 CONTACT:
 - 100u" MIN. TIN PLATING OVERALL,
 - N:50u" MIN. NICKEL UNDERPLATING OVERALL.
 - 1:GOLD FLASH OVERALL.
 - 2.2 FITTING NAIL:
 - 100u" MIN. TIN PLATING OVERALL,
 - N:50u" MIN. NICKEL UNDERPLATING OVERALL.
 - 1:GOLD FLASH OVERALL.
3. REFLOW SOLDER CAPABLE TO 260°C PER ACES SPEC.
4. SPEC. PLS. REFER TO PS-50552-XXXXX-XXX.
5. PACKAGE PLS. REFER TO 91501-XXXXX-TRP.

6. PART NUMBER

50673-XXX X X - XXX

NO OF CKT: XXX
PACKING: 0:TAPE & REEL
PLATING: N: MATT TIN
1: G/F OVER ALL

XXX	HOUSING COLOR	ACTUATOR COLOR	PACKAGE	PIN # POSITION
002	BLACK	NATURAL	91501-(2*XX+1)CR	THE LEFT SIDE (TOP VIEW)

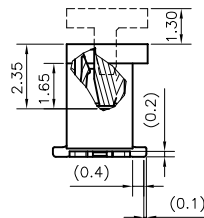
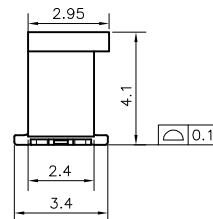
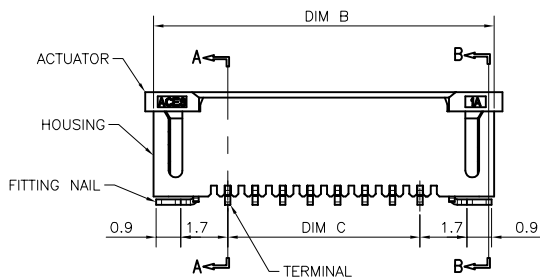


FITTING NAIL PLATE DIM.



SECTION B-B

CKTS	DIM A	DIM B	DIM C	DIM D	CKTS	DIM A	DIM B	DIM C	DIM D
004	9.0	8.4	3.0	5.1	015	20.0	19.4	14.0	16.1
005	10.0	9.4	4.0	6.1	016	21.0	20.4	15.0	17.1
006	11.0	10.4	5.0	7.1	017	22.0	21.4	16.0	18.1
007	12.0	11.4	6.0	8.1	018	23.0	22.4	17.0	19.1
008	13.0	12.4	7.0	9.1	019	24.0	23.4	18.0	20.1
009	14.0	13.4	8.0	10.1	020	25.0	24.4	19.0	21.1
010	15.0	14.4	9.0	11.1	021	26.0	25.4	20.0	22.1
011	16.0	15.4	10.0	12.1	022	27.0	26.4	21.0	23.1
012	17.0	16.4	11.0	13.1	023	28.0	27.4	22.0	24.1
013	18.0	17.4	12.0	14.1	024	29.0	28.4	23.0	25.1
014	19.0	18.4	13.0	15.1					



SECTION A-A

QUALITY SYMBOLS MAJOR Ⓢ CRITICAL Ⓢ	DRAWN BY Zhu, Wei DATE 20/04/27	
	CHECKED BY Xu, Zhi Yong DATE 20/04/27	
GENERAL TOLERANCES (UNLESS SPECIFIED) X ±0.5 .X ±0.25 .XX ±0.15 .XXX ±0.1 ANGLES ±2°	APPROVED BY Xu, Zhi Yong DATE 20/04/27	TITLE 1.0mm PITCH ZIF CONN. SMT S/T TYPE
	UNITS mm	SCALE 5:1